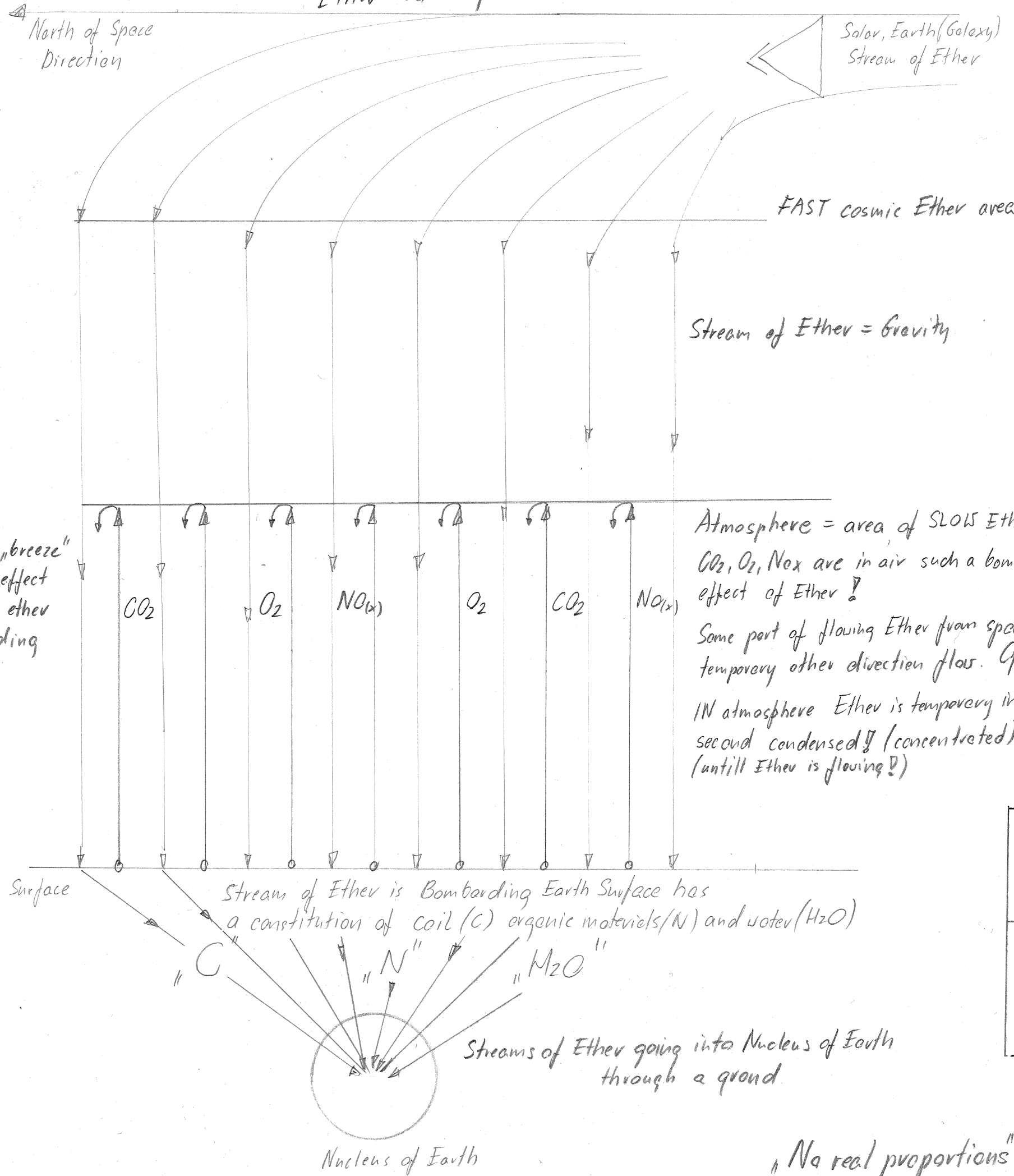
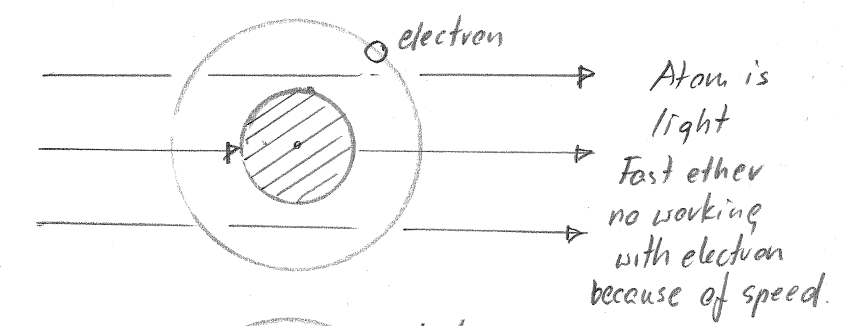


# Ether Working with Earth

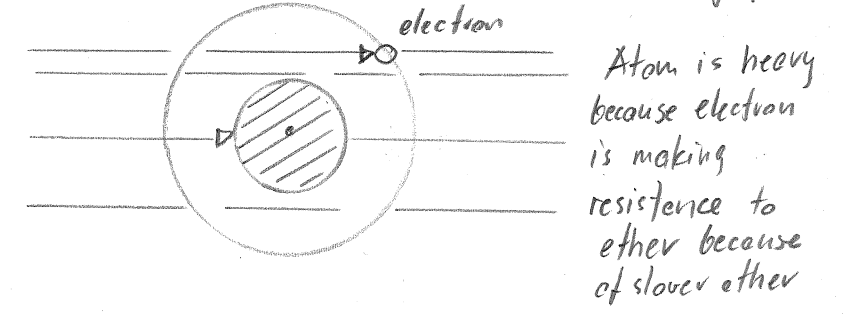


Some ATOM in:

Fast Ether



Slow Ether (concentrated in atmosphere)



Atmosphere = area of SLOW Ether  
 CO<sub>2</sub>, O<sub>2</sub>, NO<sub>x</sub> are in air such a bombarding effect of Ether!  
 Some part of flowing Ether from space has temporary ether direction flow. Oposite to main stream.  
 IN atmosphere Ether is temporary in each second condensed! (concentrated) (untill Ether is flowing!)

## Some reasons of Ether Works

Because of SLOW (concentrated) Ether in Atmosphere Can work following devices:

DNA spirals	Just spirals made from copper (for example)	Coils	Many layers Orgone ACC.
our body is receiving this way ether to LIVE!	screwed many wires for air "ionization"	Tesla's constructions (each one)	Reich's constructions

"No real proportions"